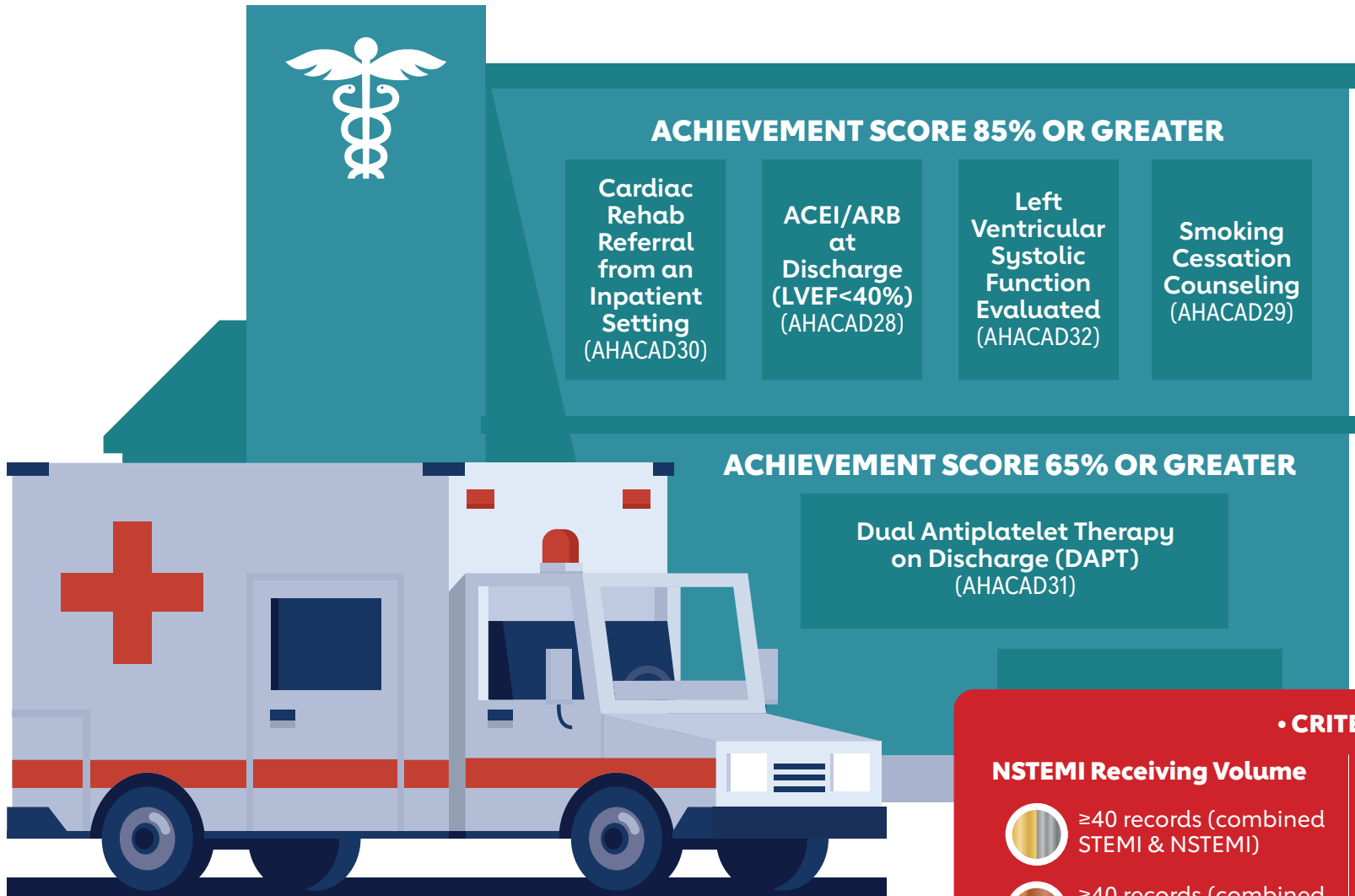


**2026**  
**HOSPITAL RECOGNITION CRITERIA**  
*(based on 2025 data)*

**NON-ST-ELEVATION MYOCARDIAL INFARCTION (NSTEMI)**



**GOLD**

2 consecutive calendar years  
 (data in all 8 quarters for NSTEMI Receiving Centers)



**SILVER**

1 calendar year  
 (data in all 4 quarters for NSTEMI Receiving Centers)



**BRONZE**

1 calendar quarter

**• CRITERIA •**

**NSTEMI Receiving Volume**

- ≥40 records (combined STEMI & NSTEMI)
- ≥40 records (combined STEMI & NSTEMI) AND ≥9 in the quarter

**NSTEMI Referring Volume**

- ≥2 NSTEMI records
- ≥1 NSTEMI records



American Heart Association.  
Target: Type 2 Diabetes<sup>SM</sup>

**2026**  
**HOSPITAL RECOGNITION CRITERIA**  
*(based on 2025 data)*

**THE AWARD REPORTING PERIOD MUST:**

- 1** Be the same calendar year as your eligible achievement award
- 2** Include the same patient population as is included in the eligible achievement award



American Heart Association.  
Get With The Guidelines.  
Stroke



American Heart Association.  
Get With The Guidelines.  
Coronary Artery Disease



American Heart Association.  
Get With The Guidelines.  
Heart Failure

**Hospital Must Qualify for Silver Level or Higher Achievement Award**

**≥10 Patients with a New Onset or Previous History of Diabetes**

**Overall Diabetes Cardiovascular Initiative Composite Score (AHASTR150) criteria:**  
≥ 80% Compliance for 12 Consecutive Months (Calendar Year)

IV Thrombolytics Arrive by 3.5 hours / Treat by 4.5 hours (AHASTR149)

Early Antithrombotics for Patients With Diabetes (AHASTR148)

VTE Prophylaxis (AHASTR154)

Antithrombotic Prescribed at Discharge (AHASTR145)

Anticoagulation Prescribed for AFib/AFlutter at Discharge (AHASTR144)

Smoking Cessation (AHASTR151)

Intensive Statin Prescribed at Discharge (AHASTR298)

Diabetes Treatment (AHASTR130)

Therapeutic Lifestyle Changes (TLC) Recommendations at Discharge (AHASTR153)

Antihyperglycemic Medication With Proven CVD Benefit (AHASTR146)

**Overall Diabetes Cardiovascular Initiative Composite Score (AHACAD73) criteria:**  
≥ 75% Compliance for 12 Consecutive Months (Calendar Year)

ACE-I or ARB for LVSD at Discharge for Patients with Diabetes (AHACAD66)

Adult Smoking Cessation Advice for Patients with Diabetes (AHACAD67)

Antihyperglycemic Medication with Proven CVD Benefit (AHACAD74)

Aspirin at Discharge for Patients with Diabetes (AHACAD68)

Beta-Blocker at Discharge for Patients with Diabetes (AHACAD69)

Cardiac Rehabilitation Patient Referral from an Inpatient Setting (AHACAD70)

Dual Antiplatelet Therapy Prescribed at Discharge (AHACAD71)

High-Intensity Statin at Discharge (AHACAD72)

**Overall Diabetes Cardiovascular Initiative Composite Score (AHAHF112) criteria:**  
≥ 75% Compliance for 12 Consecutive Months (Calendar Year)

ACEI/ARBs or ARNI at Discharge (AHAHF77)

Evidence-Based Beta Blocker Prescribed at Discharge (AHAHF78)

Post-Discharge Appointment Scheduled (AHAHF80)

Smoking Cessation (AHAHF82)

Left Ventricular Function Assessed (AHAHF79)

Lipid-Lowering Medication Prescribed at Discharge (AHAHF81)

Diabetes Treatment (AHAHF26)

Antihyperglycemic Medication With Proven CVD Benefit (AHAHF84)